

SPE VACUUM MANIFOLD



SPE Vacuum Manifold

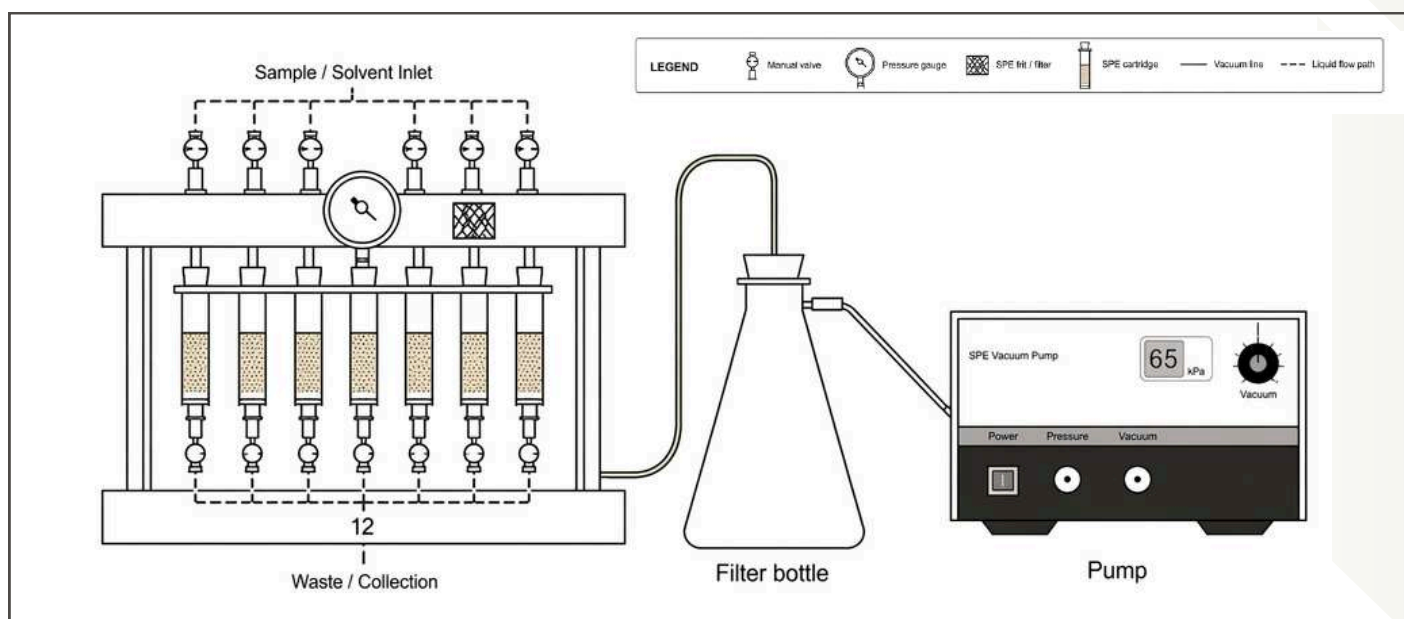


Solid phase extraction (SPE) is a chromatographic technique used to prepare samples for subsequent analysis by removing interfering substances that may be present. The general procedure includes sorbent activation, loading, washing and eluting. This is done either by retaining the substance of interest and washing off everything else or by retaining the interfering substances and eluting the product of interest.

The vacuum SPE devices are designed to concentrate or isolate analytes from complex sample matrices. It allows processing of extraction columns with high sample throughput at minimal expense. Solvents and samples are aspirated through the columns by a vacuum of 0-20 inches Hg. Eluates are collected in tubes positioned in a removable rack inside the manifold. The 12,24 & 48 -ports manifold accommodate up to 12,24 & 48 columns, respectively.

FEATURES

- Multiple sample processing saves time and money.
- Female Luer inlets fit all male Luer tipped SPE tubes and cartridges.
- Compatible with standard Luer-tipped SPE and filtration columns.
- Glass chamber allows easy visual monitoring.
- Adjustable racks accommodate a variety of test tubes, vials and flasks.
- Available in 12,24 & 48 -position for standard tubes



SPE Vacuum Manifold

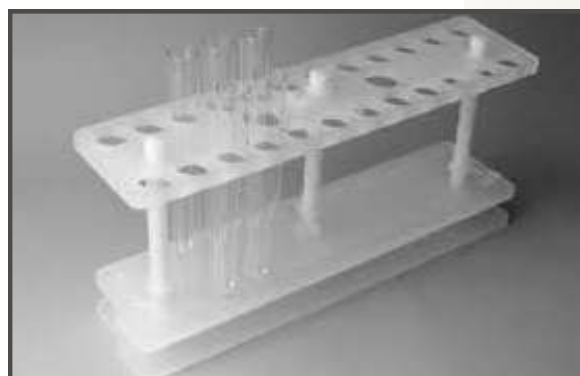
The 12 Position SPE Manifold System

Model	ALH SVM-12 S
Glass chamber	Vacuum gauge
12 position cover with Luer Fittings	12 Retaining Clips
Gasket	4 Supports
12 Individual Flow Control Stopcocks	12 Luer Plugs
3 Posts	Valve Assemble
2 Shelves	Waster container
12 Guide needles	

Product Name	Model No.	Description	QTY
Multiple Vacuum Filtration System	ALH SVM-12 S	12 Position SPE Manifold System, 12 position cover with Luer Fittings	1 Set
Filtration Flask	ALH F-1000	1 litre filtration flask	1 No.
Oil Free Vacuum Pump	ALH V - 25 P	Flow 25 LPM Max Vacuum 22" Hg (554 mm) Pressure 25 PSI Motor HP : 1/16	1 No.
Silicon Tubing	ALH SC-1	2 MTR with cork	2 MTR

The 24 Position SPE Manifold System

Model	ALH SVM-24 S
Glass chamber	Vacuum Gauge
24 position cover with Luer Fittings	24 Retaining Clips
Gasket	4 Supports
24 Individual Flow Control Stopcocks	24 Luer Plugs
3 Posts	Valve Assemble
4 Shelves	24 Guide needles
Silicon tubing - 2 MTR/ length	



The 24 Position SPE Manifold System

Product Name	Model No.	Description	QTY
Multiple Vacuum Filtration System	ALH SVM-24 S	24 Position SPE Manifold System 24 position cover with Luer Fittings	1 Set
Filtration Flask	ALH F-1000	1 litre filtration flask	1 No.
Oil Free Vacuum Pump	ALH V-75 S	Flow 45 LPM Max Vacuum 27" Hg (680 mm) Pressure 55 PSI Motor HP : 1/4	1 No.
Silicon Tubing	ALH SC	2 MTR with cork	2 MTR

The 48 Position SPE Manifold System

Model	ALH SVM-48 S
MOC : Lead - Polypropylene Body - Acrylic Glass	Vacuum gauge
48 position cover with Luer Fittings	48 Retaining Clips
Gasket	4 Supports
48 Individual Flow Control Stopcocks	48 Luer Plugs
3 Posts	Valve Assemble
4 Shelves	Oil Free Vacuum Pump

Product Name	Model No.	Description	QTY
Multiple Vacuum Filtration System	ALH SVM 48 S	48 Position SPE Manifold System , 48 position cover with Luer Fittings	1 Set
Filtration Flask	ALH F-1000	1 litre filtration flask	1 No.
Oil Free Vacuum Pump	ALH V - 75 S	Flow 45 LPM Max Vacuum 27" Hg (680 mm) Pressure 55 PSI Motor HP : 1/4	1 No.
Silicon Tubing	ALH SC	2 MTR with cork	2 MTR

SPE Vacuum Manifold

